

The MICROMETER

THE AUCKLAND SOCIETY OF MODEL ENGINEERS INCORPORATED

PO Box 14570, Panmure, Auckland, NEW ZEALAND

Club House Telephone (9) 570 5286

Club Web Site www.asme.org.nz

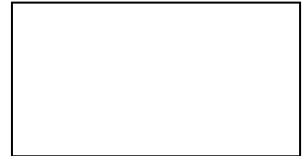
Number 530
November 2008

President Michael Jack 527 8745
E-mail address president@asme.org.nz

Secretary Brian Cotton 820 3381
E-mail address secretary@asme.org.nz

Editor Dave Russell 446 0957
E-mail address editor@asme.org.nz

REGISTERED NEW ZEALAND PUBLICATION



In this Months Edition

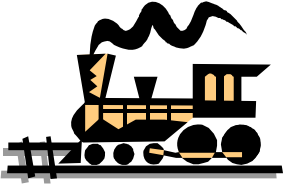
***Report on ASME Annual Exhibition
Weekend***

***Proposed Bereavement Scheme
for members***

RETURN ADDRESS
ASME
PO BOX 14570
PANMURE



A Beejax ready to leave the station



Train Roster

Date	<u>Electric</u>	<u>Electric</u>	<u>Steam</u>	<u>Steam</u>	<u>Station</u>	<u>Station</u>	<u>Station</u>	<u>Extra Guard</u>
2-Nov-08	B Cotton	R Craig	L Farquhar	<u>A Gasteen</u>	T Taylor*	A Watson	A Whillans	
9-Nov-08	T Crake	<u>P Eaton</u>	B Piggott	A Pritchard	I Ashley*	P Boyes	R Brown	
16-Nov-08	M Granger	J Harrison	<u>G Wills</u>	R VanRyn	J Burnett*	R Crook	P Cunningham	P Dowdeswell
23-Nov-08	D Housley	J McManus	<u>D Russell</u>	G Anderson	G Dickey	G Farquhar*	A Foster	
30-Nov-08	P Moy	T Robinson	<u>G Bell</u>	E Burns	W Green	D Hamp	M Hollis*	
7-Dec-08	J W-Buys	J Yearn	L Farquhar	<u>A Gasteen</u>	P Jones*	D Leybourne	I Lyons	
14-Dec-08	D Black	D Booth	<u>M Jack</u>	B Piggott	H Martin*	G Murray	E North	
21-Dec-08	T Boyd	<u>B Cotton</u>	A Pritchard	D Russell	J Olsen*	B Parker	F Putt	
28-Dec-08	----- Xmas / New Year Break - No Roster in Operation - Voluntary -----							

Bold and Underlined name – is the designated **Train Controller**, i.e. the person in overall control of all operations for the day.

Bold with Asterisked* name – is the designated **Stationmaster**, i.e. the person responsible for activities in the station area for the day. The Stationmaster is also responsible to account for the day's takings.

Special note Re: Charging Club Locos When plugging in the charger on either of the club locos please remember that you insert the plug and then turn it clockwise, the plug retainer will then click into position. After plugging in please remember look at the charger ammeter to ensure charging has started.

Club Calendar November 2008

November 4 th	Monthly General Meeting and Annual General Meeting 7.30pm
November 8 th	Working Bee at Clubrooms, from about 9.00am
November 11 th	Committee Meeting
November 18 th	Beginners Night
November 22 nd	Glenbrook Vintage Railway, Open day for enthusiast clubs. Be there by 1.00pm. Train rides and workshop visit payment by donation .
Every Tuesday	Tuesday Club

Committee Meeting Notes 14th October 2008

The minutes of the previous meeting were read and confirmed as a true record.

Matters Arising: Dave Russell has some prices for new locomotive batteries. The batteries in the Ec appear to have lasted just over five years. It was suggested that we wait to see how the current batteries last. Incorrect plugging in of the charger appears to be an ongoing issue.

The sign about chair stacking is under action.
More work has been done on the website.

Grant has ordered the badges but has no ETA as yet.
Re-labeling of pamphlets ongoing.

Correspondence:

IN – Grant Anderson

OUT – Bruce Piggott, MEANZ, Hugh Martin, Green Bay Auctions, Auckland City Council

Finance: Statement of accounts, plus payments for approval, read and approved.

Sub Committees:

Boilers: One tested

Works: Some track repairs carried out. Graffiti removed. Drains concreted. Some trolleys adjusted. Pipe stolen from toilets replaced (with plastic).

Library: Nil

Stores: Stores page on website updated.

Safety: MEANZ have been approached about an external audit of the club's safety system.

General Business:

An insurance claim is to be put in for the theft of the copper pipe.

There was a discussion about the thief's access to the toilets. The possibility of a key audit and/or the re-keying of the locks was brought up.

The doors to the toilets appear to have been forced rather than unlocked.

A quote has been received for an alarm to be installed in the toilets. The quote does not include a trench which is required to be dug.

Greville to seek a quote for a proximity card system for the alarm.

A convener is required for ASME's contribution to the Glenbrook Waitangi weekend exhibition. Volunteers to be sought in the next newsletter.

Greville noted the passing of Ivor Marsh.

Bereavement Assistance Scheme – It was moved that the Kapiti scheme be modified for ASME's requirements and published in the newsletter. The scheme is then to be presented for discussion at the AGM with a view to ASME adopting it.

The printer which passed in at the auction to be donated to the Society.

It was determined that the \$10 "new member" fee is payable by anyone wishing to become a member, including lapsed members.

Graeme proposed investigating a new shelving system for the cups in the kitchen, and also mentioned some problems he had encountered with the dishwasher.

David suggested that the benefit day for the ASME guide dog puppy should be the Panmure Basin Festival Day. This is set for 15 February 2009.

50th Jubilee: Applications to the ASB Community Trust and the Mt Wellington Community Trust for funding are ongoing.

Dave Russell has obtained further details about display shelving at the expo.

Brian Cotton

Annual General Meeting to be held 4th November 08 7.30pm

Agenda:

Apologies.

Pause for remembrance of members who have passed away.

Minutes of previous AGM.

Matters Arising.

President's Report.

Treasurer's Report.

Setting of 2009 Subscription Rates.

Appointment of Auditor.

Election of Officers:

President

Vice President

Secretary

Treasurer

Committee – up to nine members including Editor and Librarian.

General Business:

1. A motion has been received for one member to be made a life member of the Auckland Society of Model Engineers.

This motion was notified to the secretary more than 28 days prior to the AGM and is supported by the required number of members pursuant to Clause 6.5 of the Club Rules.

2. Murray Lane's proposal to change the criteria for the awarding of the Frank Roberts Cup. Currently this cup is awarded to the best model of an NZR prototype.
3. Discussion about the Bereavement Assistance Scheme with a view to its adoption by the Society.

Brian Cotton
Secretary

ASME Annual Exhibition & Open weekend Sept 27 – 28, 2008

Saturday dawned with weather unsettled but dry and remained overcast. 10am found the electric loco running although the station was short staffed three members coped with driving, guarding and ticketing. Soon Grant Anderson's "Beejax" and Alan Ure's AB were also steaming and giving rides for the small crowd.

Alan and John Ure, John Bremner and another whose name escapes me were the visitors from Hamilton. Rex Toms was in attendance from Rotorua as were Jim McLean, Bob Vines and Paul Staub from Manukau Live Steamers.

The display ran 18 locomotives, 3 parts thereof, 5 traction engines, 1 Clayton steam truck, 1 Shand-Mason fire engine, 1 field gun, 27 stationary engines, 3 petrol engines, 1 hot air engine and 34 various fine tools, lathe attachments etc.

The standard was generally excellent and in particular the show pieces were Ray Brown's Fowler 3F in British Rail livery and Alan Gasteen's BR class 4 tank locomotive (unfinished) this was running on air.

The evening passed with a catered dinner (very nice too) attended by 41 persons.

At 2.30am the security staff consisting of Grant Anderson and Mark Richardson awakened, startled and terrified by the burglar alarm going off, It was subsequently discovered to have been caused by a spiders web on the smoke alarm sensor.!

Sunday was also overcast but stayed dry, Dave Russell steamed the "Maid of Kent" and Mike Banks his "Beejax", this gave the electric loco an easy time with the small but steady crowd handled mainly by the steam locos.

All in all it was a pleasant relaxed weekend without overcrowding and giving plenty of opportunity for socializing. The track takings came to about \$1,000 and this would have helped cover the catering. Morning, lunch and afternoon tea were furnished by Jocelyn Murray with many toothsome comestibles. Please accept my apologies for any omissions or errors.

Alan Pritchard



ASME Annual Exhibition Awards



Jackson Championship Cup for the best completed exhibit. This was awarded to **Mike Banks** for his version of a 5" Beejax locomotive.



Jack & Ethel Hocking Cup for the best British locomotive prototype to any stage. This was awarded to **Alan Gasteen** for a British Rail Class 4 locomotive, and boiler.



Peter Baker Memorial Award for the best painted exhibit. This was awarded to **Ray Brown** for his 'Jinty' locomotive.



Kresta Cup for the best engineering exhibit to any stage. This was awarded to **Alan Foster** for his own designed Commer TS3 engine.



Committee Cup for the best junior exhibit or at the Judge's discretion for any exhibit. **Jim Greasley's** Shand-Mason fire engine.

ASME Shield for the best item of workshop equipment. This was awarded to **Mike Banks** for a large boring head

Les Fit Memorial Award for any exhibit to any stage at the discretion of the judges. Awarded to **Peter Moy** for his freelance 1" traction engine.

Beginners Medallion at the judge's discretion for the best improved beginner. This was awarded to **Christopher Ratcliffe** for a 5" tank wagon.

Highly Commended Certificates awarded at the judge's discretion.

Ross Purdy for a Quayle beam engine.

Graeme Murray for an improved tool holding system for use in a lathe.

David Russell for a tool grinding rest.

Around the Clubs, reviewed by Alan Emerson

Northern Views, Whangarei, Sept 08

Building the Dash 9. Live steam in South Africa. Too much rain.

The Keirunga Park Platform, Havelock North, Spring 08

Building the Alco PA. Submarine story. Article on the North Yorkshire Moors Railway where, amongst other things, the TV series Heartbeat was filmed. Some good funnies.

Conrod, Otago, Sept 08

Good Club news, a monster roller coaster and some performance evaluations. [of people]

Steamers and Dreamers, Manukau, August 08

Good write up of Dave and Lynne Giles trip around the world in 40 days. Sounds great!

Durban Society of Model Engineers, Aug and Sept 08

Pictures of the Elbow engine, more problems with the available coal. Drawings of a crankless engine and a Coomber engine. These are from the website www.keveney.com which has animated engines of all sorts.

Upcoming Model Engineering & Associated Events

22 Nov 2008	Glenbrook Vintage Railway, Open day for enthusiast clubs. Be there by 1.00pm. Train rides and workshop visit payment by donation.
13-14 Dec 2008	Rotorua Model Engineers Club, Open Weekend
6-8 Feb 2009	Glenbrook Steam & Vintage Country Festival
15 Feb 2009	Panmure Basin Festival
14-15 March 2009	Wanganui Model Railway and Engineering Society, Model Train Show
2-4 October 2009	A.S.M.E. 50th Jubilee Exhibition
5-11 Jan 2010	Nelson M.E., Steam and Cinders 2010 International Live Steam Convention

Wanted

I am a model Engineer who is a member of the Gore & Southland clubs, I am currently building my own 5 & 71/4-gauge ground level track, which I hope to have part of it going this summer. Also am building a Rogers Q which is still a year or so away. I would like to buy a 5" or 71/4" steam loco to use in the mean time, so if any loco's come up for sale, would it be possible to let me know, Living at Cromwell I don't hear of any for sale. The track will be about 1/2 km in length, with three bridges. It is a private track, which can be used by other model engineers

Russell Arnott

112 Ord Road / Ripponvale, RD2 / Cromwell / russa@ihug.co.nz

Hi I would like to purchase a set of castings/drawings for a steam loco or traction engine will consider a started project any gauge, I live in Hawke's bay and I'm a member of the Anderson park model engineers

John Perry

Engineering Services Manager / **Ravensdown** / m 021 900 310 / p 06 834 1759 / f 06 834 3268 / jep@ravensdown.co.nz

Convener Required

A convener is required to convene the ASME display to be held at the Glenbrook Vintage Railway Steam & Vintage Country Festival 2009. The dates are 6th, 7th and 8th February 2009. this event will be an excellent stage to promote our up-coming Jubilee celebrations.

Interested persons should contact the club President or Secretary.

ASME Bereavement Assistant Scheme

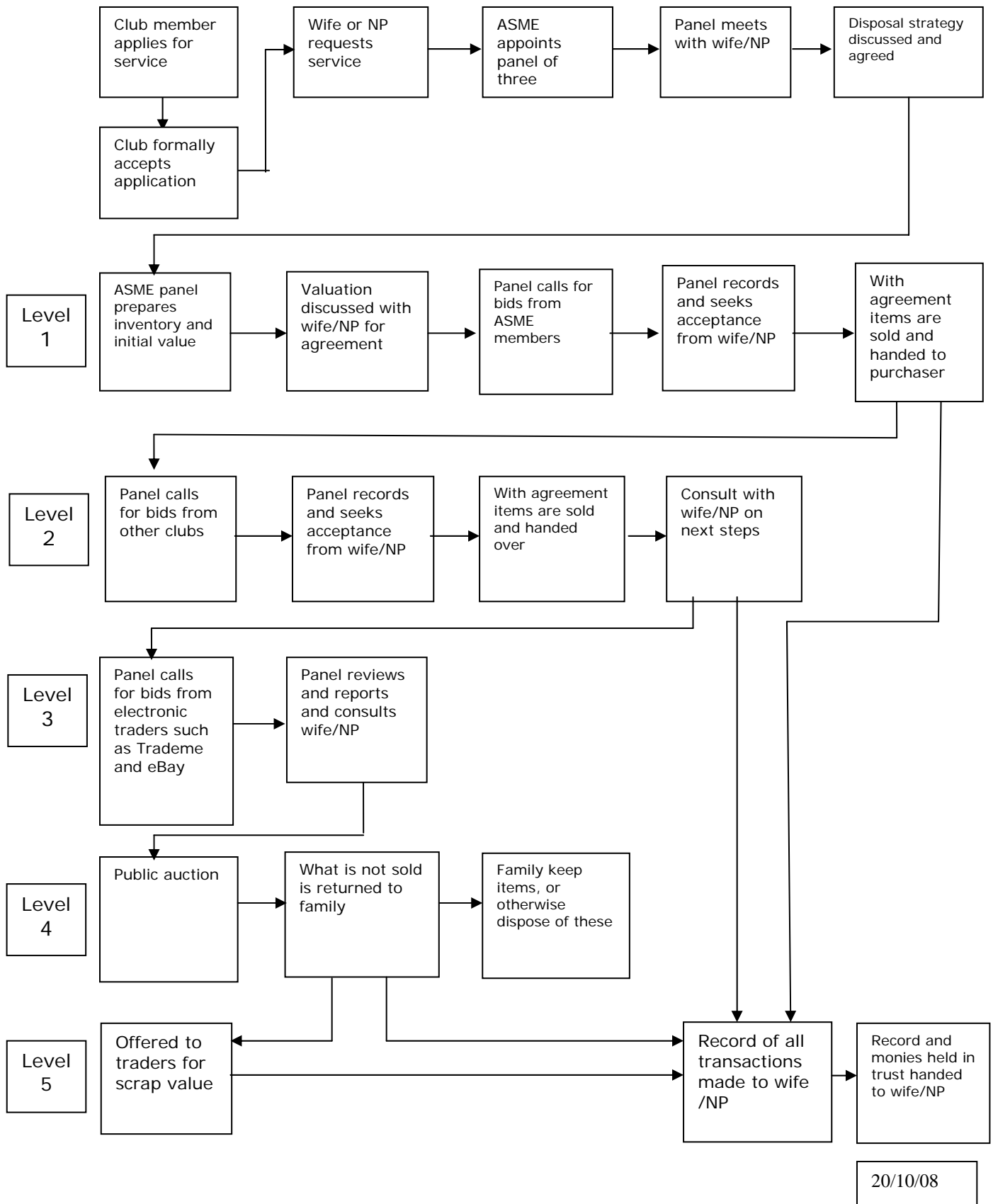
Recently there has been a call within the club for the committee to formalise a trust or some sort of scheme to provide some assistance to family's or partners of members who have passed away. The main reason for this is to prevent loved ones from being ripped off by unscrupulous traders when faced with disposing of models, workshop tools and equipment etc belonging to a deceased member.

The idea has been discussed by the committee at some length.

The Kapiti Miniature Railway has recently provided a Bereavement Assistance Scheme for their membership. It is proposed that ASME adopt a similar scheme and the scheme proposal will be open for discussion at the AGM.

The following two pages give the detail as proposed by the committee, please study these in advance of the AGM.

**AUCKLAND SOCIETY OF MODEL ENGINEERS
BEREAVEMENT SCHEME**



20/10/08

AUCKLAND SOCIETY OF MODEL ENGINEERS
Bereavement Assistance Scheme

I.....
(Please print full name)

of
(Residential address)

request that the Executive Officers (President, Treasurer, Secretary) of the Auckland Society of Model Engineers Inc (ASME), in the event of my death or incapacitation to render assistance and/or advice to my wife or nominated person (NP) in respect of my workshop equipment, materials, models, technical books/magazines discuss with my wife or NP the general strategy for the disposal of the items. The attached disposal strategy has examples for discussion and agreement.
and to take such further action as agreed by my wife or NP

I understand that in regard to this request, all the following points will apply:

1. An approach to my wife or NP by members of the ASME will only be made following her/his request for assistance.
2. The Executive Officers of the ASME will nominate a panel of three suitably qualified panel members assisting officers who will jointly confer with my wife or NP, value equipment, materials, models etc and take such further action as requested.
3. The Executive Officers may replace any member of the panel at their discretion, and my wife or NP may request the Executive Officers to make such replacement.
4. Participation in this scheme cannot in any way affect my Last Will and Testament, nor does it give the ASME Club any authority whatsoever over my estate or to act in any way contrary to the wishes of my wife or NP.
5. Confidentiality between my wife or NP, the three panel members and the ASME's Executive Officers will be observed at all times.
6. Where a request is made to dispose of any property, such property must first be valued by the three panel members acting jointly, my wife or NP then informed of the valuation(s) and her/his written request obtained (on a form to be supplied by the Club secretary) to have the property sold, or firm buyers identified at no less price than the values specified. When sold, the full amount realised is to be paid to my wife or NP.
7. Details of the Offer of Sale of any property is to be announced at the earliest monthly meeting of the Club and where two or more members offer to purchase an item it is to be sold to the highest bidder. Failing sale at the meeting, the next offering is to be at the discretion of the panel of three advisors, but any reduction in price is only to be accepted with the approval of my wife or NP. Offers to dealers will only be made as a *last* resort.
8. No commission or charge for the services outlined herein, will be made by the Club or any of its members.
9. I can withdraw from this scheme at any time by notifying the secretary of the Club in writing.
10. Participation in this scheme by my wife or NP is to be on the strict understanding that she/he and all my beneficiaries indemnify the ASME Club and all its members against any legal action or claim because of any act, statement, omission or other thing whatsoever done by the ASME Club, its Executive Officers or any of its members acting in good faith.

My wife/nominated person's full name is
(Please strike out as appropriate) (Please use block capitals)

If a nominated person, please state relationship (if any)

Detail any Special Requests or Instructions (using a separate signed sheet if necessary)

Signed: _____ Witness _____
(To be an ASME Club member)

Print Name _____ Print name _____

Date _____